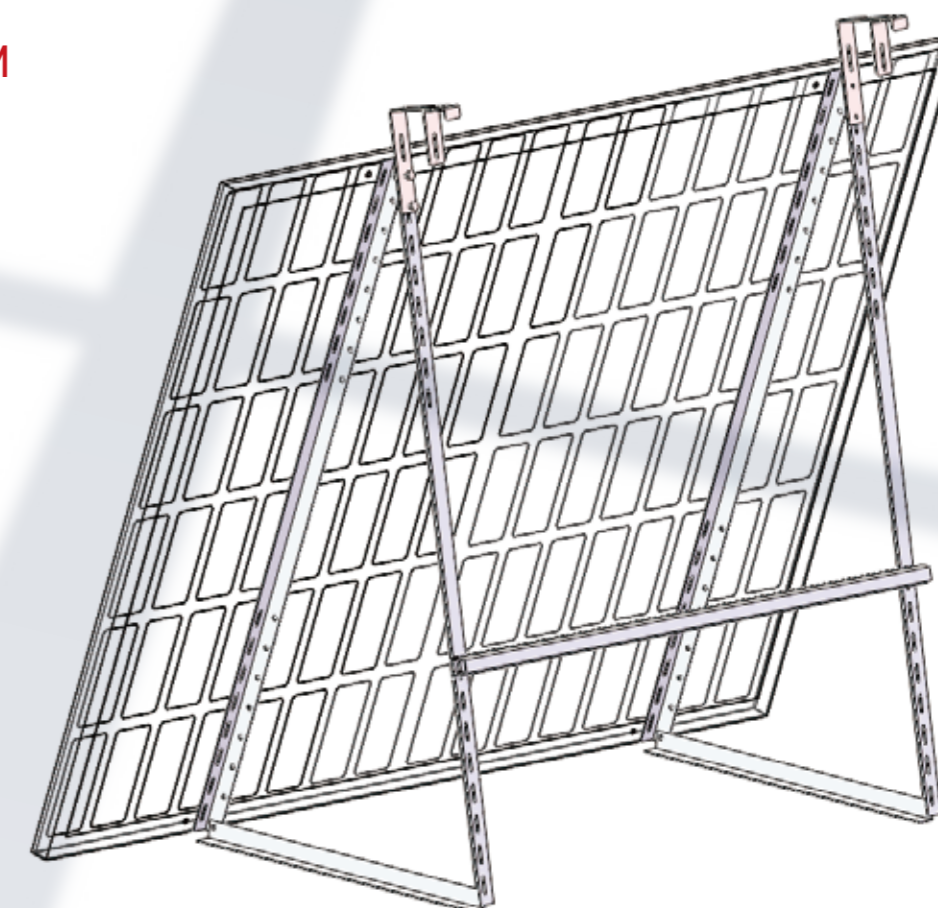


Smart Balcony Solar Kit

SUNOVA-EZ1-410M
SUNOVA-EZ1-410

Suitable For



 **Adjustable Angle**

According to different installation environments and requirements, the angle of the bracket can be adjusted to obtain the maximum power generation.

 **All-in-one Design**

The system integrates with solar panels, inverters and cables. Portable and foldable for various applications.

 **Portable**

Compact and small sized be transported

 **Easy Installation**

Plug & play connection, no requirement for professional installation, saving installation costs.

 **Guaranteed Quality**

Under one system of SUNOVA SOLAR warranty
Micro inverter 12 years warranty;
Solar panels 15 years.

Sunova Solar Technology Co., Ltd

Wuxi Factory:

Building E, Phase II, Standard Workshop, Runzhou Road, Huishan Industrial Transformation and Agglomeration Area,
Wuxi, Jiangsu Province, P.R. China

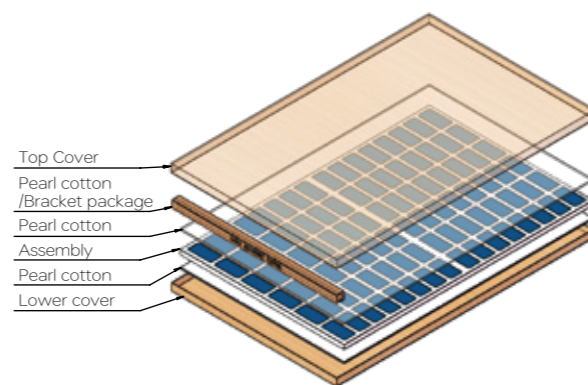
Tel: +86 510 8595 9369 | Email: info@sunova-solar.com | Web: www.sunova-solar.com

Technical Data

Model	SUNOVA-EZ1-410M	SUNOVA-EZ1-410
Microinverter Parameter		
Microinverter Model	EZ1-M	
Recommended Input Power (STC)	300Wp-730Wp+	
MPPT Voltage Range (V)	28V-45V	
Max. DC Short Circuit Current (A)	25A x 2	
Max. Input Current (A)	20A x 2	
Rated Output Power (VA)	600VA / 799VA	
Rated Output Current (A)	2.6A / 3.5A	
Nominal Voltage / Range (this may vary with grid standards)	230V/184-253V	
Nominal Frequency / Range	50Hz/47.5Hz-51.5Hz	
Enclosure Environmental Rating	IP67	
Safety, EMC & Grid Compliances	EN 62109-1/-2; EN 61000-1/-2/-3/-4; EN 50549-1; DIN V VDE V 0126-1-1; VFR; UTE C15-712-1; CEI 0-21; UNE 217002; NTS; RD647; VDE-AR-N 4105	
Warranty	12 Years	
PV Balcony Mount	with	without
Solar Panel		
Module	Zosma S 410 (Standard) / Zosma S Black 410 (Optional)	
Maximum power – Pmp (W)	410	
Module dimensions (L*W*H)	1722 x 1134 x 30mm	
Weight	22 kg	
AC End Cable Parameter		
Length of Cable (m)	5	
Wire Gauge	3 * 1.5 mm ²	
Plug Type	Depending on specific country	
General Parameter		
Package Size per Solar Panel (W×H×D mm)	1787 x 1150 x 55	
Package Size per Accessories (W×H×D mm)	335 x 328 x 160	

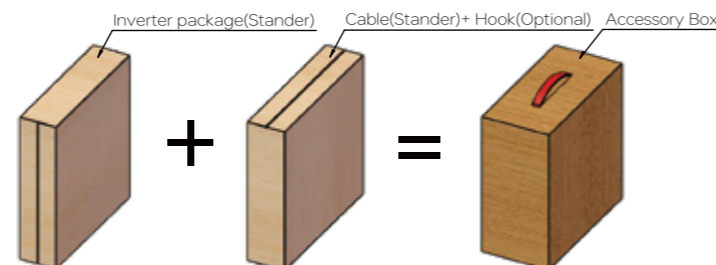
Ordering Information

Ordering NO.	Description
SUNOVA-EZ1-410M	600W Micro inverter (can be increased to 800w through the App), Zosma S 410/Zosma S Black 410 × 2, PV balcony mount × 2, 5m AC cable x 1, 1m DC cable x 1 pair
SUNOVA-EZ1-410	600W micro inverter (can be increased to 800w through the App), Zosma S 410/Zosma S Black 410 × 2, 5m AC cable x 1, 1m DC cable x 1 pair

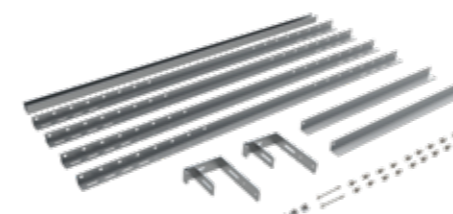


Packing Information

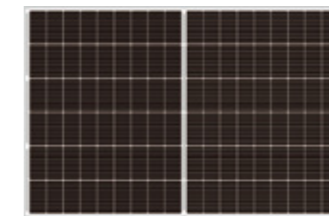
Container size	Packing quantity
40'HQ	Solar Panel 18 pcs/Pallet, 432 pcs Accessories 216 sets



Standard Configuration



PV Balcony Mount (Optional)



Zosma S 410 (Standard) / Zosma S Black 410 (Optional)



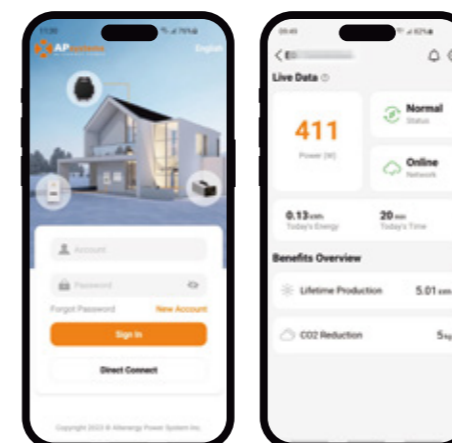
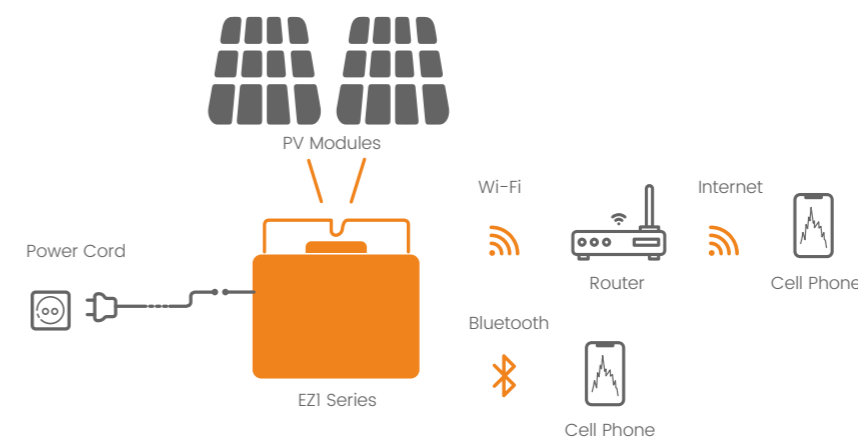
AC Cable
(5 meters)



EZ1-M



DC Cable
(1 meters)



Monitoring Platform

AP EasyPower is an energy monitoring mobile application software. Users can use AP EasyPower to monitor the real-time operation of the entire photovoltaic power generation system, historical power generation data and environmental protection benefits generated by the operation of the system.

AP EasyPower also realizes the monitoring of the running status of each component, and can issue early warning in advance.