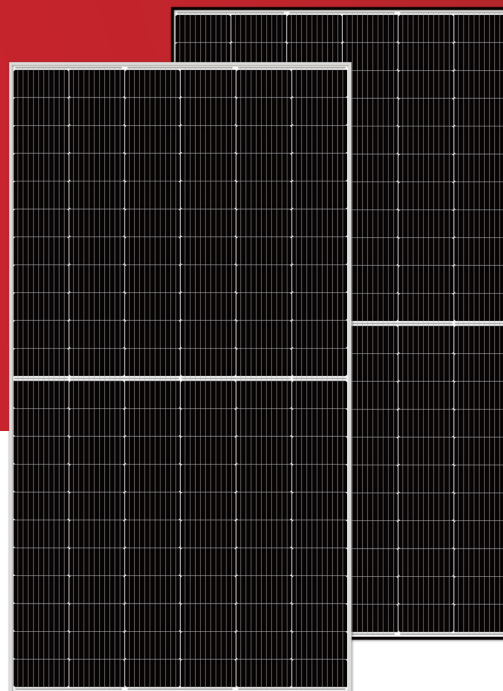




Zosma™ M

490-510W

High efficiency half-cell mono PERC module



Excellent low irradiance performance



Better light trapping and current collection to improve module power output and reliability



Industry-leading, lowest thermal coefficient



Optimized electrical design and lower operating current for reduced hot spot loss and better temperature

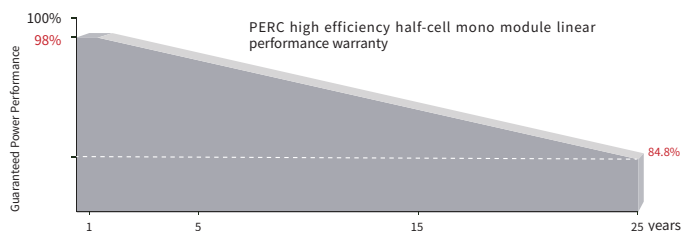


Certified to withstand 2400 Pa of wind load and 5400 Pa of snow load



100% triple EL test, which greatly reduces the hidden cracks rate

LINEAR PERFORMANCE WARRANTY



15 years

Product quality & process guarantee

25 years

Linear power guarantee

0.55 %

Annual degradation over 25 years

COMPREHENSIVE CERTIFICATES



IEC61215/IEC61730/IEC61701/IEC62716/
IEC62804/IEC60068/UL61730

ISO 9001: Quality Management System

ISO 14001: Environmental Management System Standard

ISO 45001: International Occupational Health and Safety Assessment System Standard

SA 8000: 2014 Social Accountability Management System

WARRANTY INSURANCE



* Optional performance warranty insurance. Please contact our local sales staff for more information.

* Different markets have different certification requirements. Also, the products are under rapid innovation. Please confirm the certification status with regional sales representatives.

ELECTRICAL CHARACTERISTICS

Model of modules	SS-490-66MDH		SS-495-66MDH		SS-500-66MDH		SS-505-66MDH		SS-510-66MDH	
	STC	NOCT	STC	NOCT	STC	NOCT	STC	NOCT	STC	NOCT
Maximum power — P_{mp} (W)	490	365	495	369	500	373	505	376	510	380
Open-circuit voltage — V_{oc} (V)	45.25	42.71	45.34	42.80	45.43	42.88	45.54	42.99	45.61	43.05
Short-circuit current — I_{sc} (A)	13.71	11.08	13.78	11.13	13.85	11.19	13.95	11.27	14.06	11.36
Maximum power voltage — V_{mp} (V)	37.27	34.89	37.34	34.96	37.41	35.02	37.53	35.13	37.62	35.22
Maximum power current — I_{mp} (A)	13.15	10.46	13.26	10.55	13.37	10.64	13.46	10.71	13.56	10.79
Module efficiency — η_m (%)	20.6		20.8		21.1		21.3		21.5	
Power tolerance (W)	(0,+5)									
Maximum system voltage (V)	1500									
Maximum rated fuse current (A)	25									
Current operating temperature (°C)	-40~+85°C									

STC (Standard Testing Conditions): Irradiance 1000W/m², Cell Temperature 25 °C, Spectra at AM1.5

NOCT (Nominal Operating Cell Temperature): Irradiance 800W/m², Ambient Temperature 20°C, Spectra at AM1.5, Wind at 1m/s

STRUCTURAL CHARACTERISTICS

Module dimensions (L*W*H)	2094 x 1134 x 30 mm
Weight	25.3 kg
Number of cells	132 cells
Cell	PERC monocrystalline
Glass	Tempered, 3.2 mm AR, high transmittance, low iron
Frame	Anodized aluminum alloy (Silver/Black)
Junction box	IP68, 3 bypass diodes
Output wire	4.0 mm ² , wire length: 300mm/1200mm/customized length
Connector	MC4 Compatible
Mechanical load	Snow load: 5400 Pa * / Wind load: 2400 Pa ☼

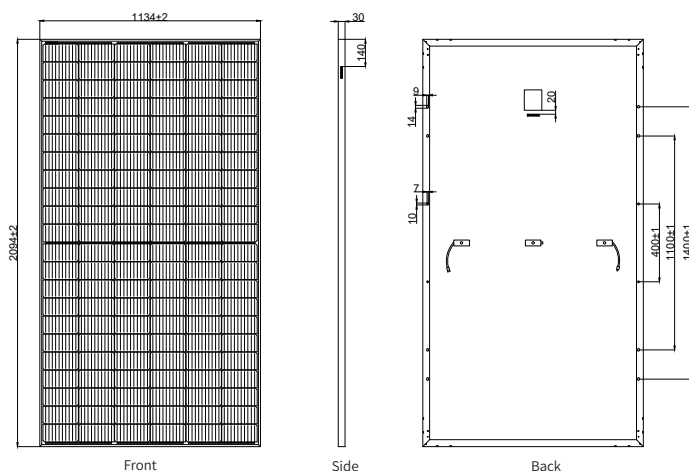
TEMPERATURE PERFORMANCE RATINGS

Temperature coefficient (P_{max})	-0.33 %/°C
Temperature coefficient (V_{oc})	-0.26 %/°C
Temperature coefficient (I_{sc})	+0.06 %/°C
Nominal operating cell temperature	43±2 °C

PACKAGING CONFIGURATION

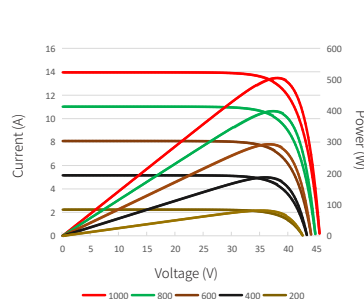
Container	40HQ
Quantity/pallet	36
Pallets/container	22
Quantity/container	792

MODULE DIMENSIONS (MM)

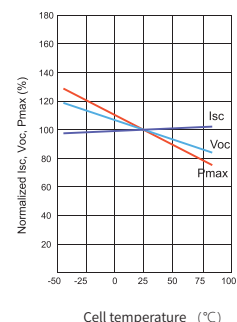


* The unmarked tolerance is ±1 mm
Length shown in mm

Current-Voltage & Power-Voltage Curves (495W)



Temperature Dependence of I_{sc} , V_{oc} , P_{max}



Web: www.sunovathornova.com

E-mail: info@sunova-solar.com

THORNOVA SOLAR **SUNOVA SOLAR**

* The technical parameters contained in this data sheet may exhibit variations contingent upon the region. Sunova Solar and Thornova Solar do not guarantee their full accuracy. Due to continuous innovation, research, development and products improvements, Sunova Solar and Thornova Solar reserve the right to adjust the information in this data sheet at any time without prior notice. Clients are urged to procure the most recent version of this data sheet and incorporate it as an intrinsic component of the legally binding agreement ratified by both parties. The Chinese (or any other language) translation of this data sheet is for reference only. If there is any discrepancy between the English version and the Chinese version (or other language versions), the English version shall prevail.